



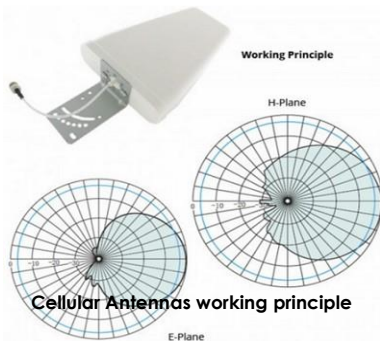
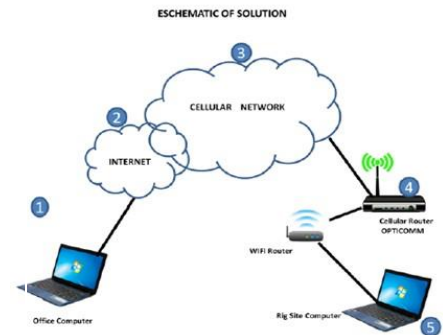
The **cellcanyon™** is a Triangulation Cell Tower System for Optimization of Signal strength which provides uninterrupted internet access on most remote sites where cell coverage is not available.

**cellcanyon™** Communication System works by using OEM hardware and proprietary cell tower triangulation software in the CELLCANYON™ Router in a configuration that allows for the system to locate and maintain an optimal signal.

## cellcanyon Specifications Details

### ✓ OEM 3G/4G LTE cellular router

- 700/2100 (AWS) Mhz
- Dual Wi-fi interface & TX power of 2.4 GHz & 5 GHz
- **Maximum speed**—LTE-Advanced (LTE-A) up to 300Mbps
- 2x 50Ω SMA Connectors (Center pin: Female)
- Compatible with most major carriers
- FCC part 15 Class B



### ✓ Cellular Antennas

- 700-2700 Mhz
- Dual-Band, High-Gain Outdoor Directional Cellular Antenna
- Works on All Cellular Bands
- High gain 21 dBi performance increases signal strength and data speeds in areas with marginal coverage

### ✓ Physical dimensions and weight

- 5ft Antenna Pole, expansible up to 10ft
- Weight: 30lbs

### ✓ Power Consumption & Environmental

- Typical 3.5W, Max 15W
- Operating temperature 32°F to +104°F
- Reduced cellular performance above 158°F
- Nema 4 enclosure box
- Relative Humidity 5% to 95% (non-condensing)



**cellcanyon™** is proven to be very reliable and is designed from the ground up to minimize maintenance required to keep the system up and running.